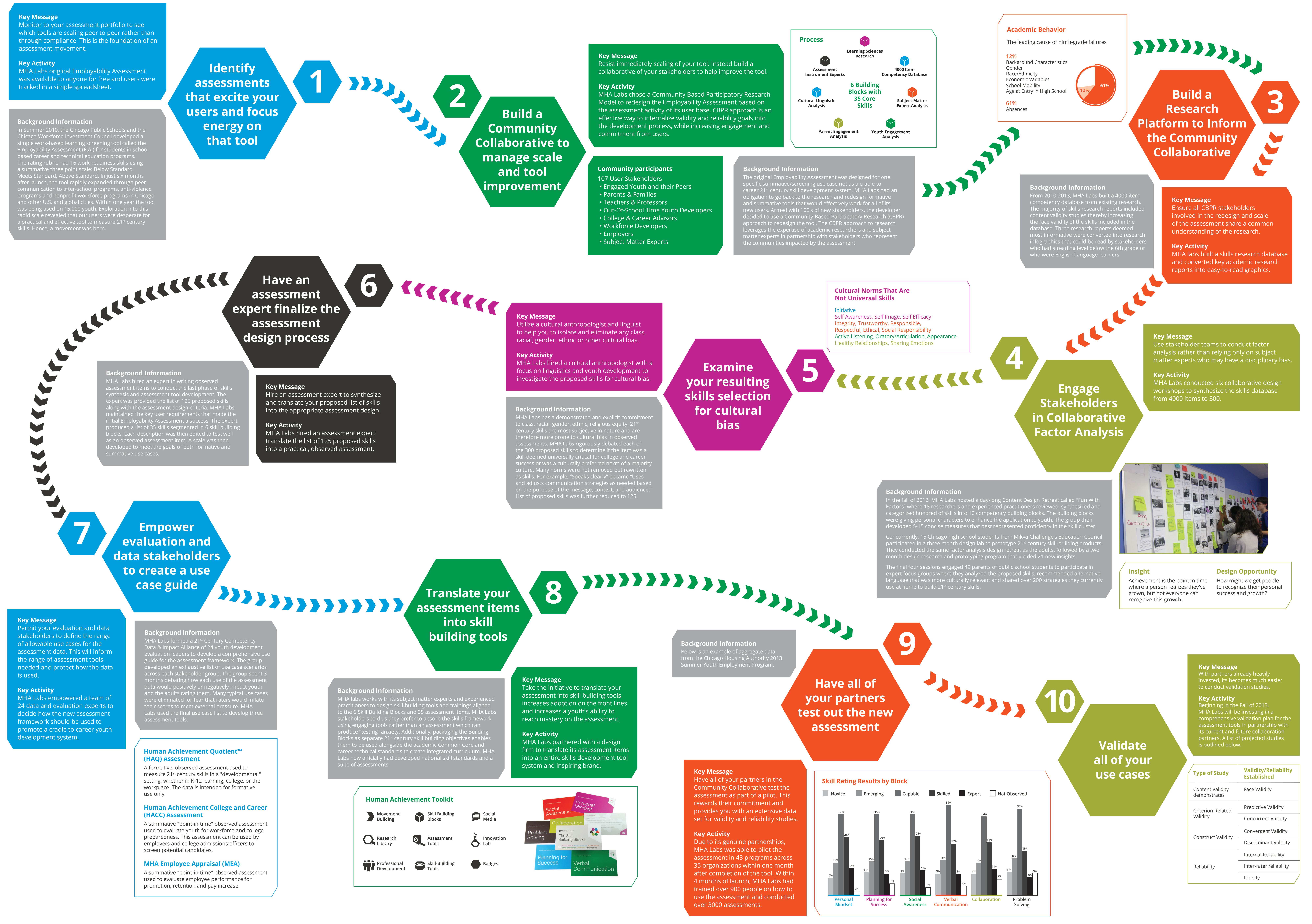
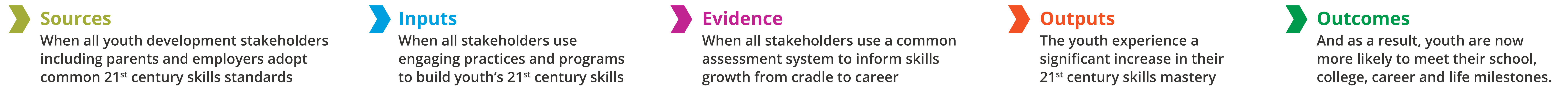


A step by step guide to how a community collaboration called MHA Labs is creating comprehensive and engaging assessments to support 21st century youth

Laurel Crown, Ph.D., Chicago Public Schools
Wendy Fine, AM, Youth Guidance
Leslie Beller, Director, MHA Labs

Theory of Action - Model for Evaluation



Launched in 2012, MHA Labs is the manifestation of a three year grassroots movement to radically improve the 21st century skills, college and career readiness of youth and young adults from cradle to career. With over 400 schools, organizations and workforce programs in its stakeholder base, MHA Labs innovates at the scale and diversity needed to turn promising practices into system solutions.

MHA stands for the means and measure of human achievement. Our stakeholders envision a world where young people are vested with the skills and resources they need, to achieve the personal, family, and community aspirations they want.